



# Research Grants

## Funding Submission Guide

The Office of Responsible Gambling (the Office) leads programs and initiatives to prevent and reduce gambling harm and provides public policy advice to the NSW Government. The Office's work includes research, community education and awareness, intervention, support and treatment services.

This includes programs funded by the NSW Government's Responsible Gambling Fund (RGF). The RGF plays a key role in advising the NSW Government on the allocation of funds for initiatives and programs that support responsible gambling and prevent and minimise gambling harm.

Updated July 2025



**Office of Responsible Gambling**



The RGF is established under the *Casino Control Act 1992 (Section 115)* and receives income from a levy on each casino licence in NSW. Expenditure from the RGF is managed by Trustees subject to a trust deed and is approved by the Minister relating to the expenditure of that money for purposes relating to responsible gambling.

The RGF is managed by the Office which sits within the NSW Department of Creative Industries, Tourism, Hospitality and Sport.

## Research Grants

The RGF provides funding for a range of research projects to build the evidence base for responsible gambling policy, interventions and programs.

Research proposals should advance the priority research themes outlined in the [RGF Research Agenda 2024-2027](#).

We fund relevant, timely, and rigorous research to build an evidence-base that:

- informs improvements to policy and regulation
- evaluates and guides improvements to programs and support
- contributes to an informed public discussion on gambling harm
- anticipates and keeps pace with emerging trends.

The Office encourages research proposals involving:

- collaborative partnerships, for instance between academics and industry or service providers
- early career researchers
- applications from a diverse range of disciplines, fields and contexts, to ensure issues are explored from a range of perspectives.

## Priority research themes

The priority research themes and sub-themes of the Responsible Gambling Fund are detailed in full in the Research Agenda 2024-27. The themes are:

- Individual and community level gambling harm minimisation
- Regulation of gambling products, practices and environments
- Gambling and gambling harm among vulnerable groups
- Emerging technologies and new trends
- Measuring and understanding gambling prevalence and harm
- Efficacy and effectiveness of treatment.

## Early career researchers

A priority of the strategic plan is to build capability and capacity in the gambling research field, in particular, broadening the pool of researchers.





Projects involving early career researchers are strongly encouraged.

## Types of projects

The Office is open to supporting a wide range of proposals. We encourage a wide range of research activities, including:

- literature reviews
- academic and applied research projects
- data analysis and data linkage studies
- pilots and trials to test feasibility
- evaluations of programs and services.

## Eligibility

To be considered for funding a proposal needs to:

- be submitted by an organisation with an ABN
- clearly set out the need or gap it will address, and the outcomes it will have for people throughout NSW or for a targeted region/community in NSW
- address a priority research theme of the RGF, which are identified in this document and expanded on in the RGF Research Agenda 2024-2027
- be for a project with a fixed timeline and not for recurring, infrastructure or capital expenditure, or for operational costs including permanent staffing.

Staff from the Office review all applications to ensure that they are eligible.

Our staff may seek clarification or additional information from applicants during the eligibility review process.

If you are unsure if your organisation is eligible, please contact the Office of Responsible Gambling Grants team.

## How to apply

The Office considers research proposals throughout the year.

All proposals are to be submitted via the Office's grant [portal](#).

To express your interest in submitting a proposal contact the Office at [info@responsiblegambling.nsw.gov.au](mailto:info@responsiblegambling.nsw.gov.au) to discuss the submission. Applicants demonstrating that they meet the eligibility criteria will be given access to the Office's grant [portal](#) to lodge a proposal.

For more information on the program visit NSW Government Grants and Funding Finder website [Office of Responsible Gambling grants and funding | NSW Government](#)



## Funding limit

The program can provide funding up to \$200,000. Co-contributions are strongly encouraged, either direct or through a contribution in kind.

## How applications are assessed

Applications will be assessed by subject matter experts against the following criteria.

### Merit (30%)

The extent to which the proposal:

- is likely to impact policy and practice to address gambling harm
- clearly identifies a *need* or *gap* and how the proposal will address this
- sets out the *benefit* of the project — the possible impact and who specifically would benefit
- outlines clear research questions and an appropriate research design and methodology to answer those questions
- demonstrates understanding of and responsiveness to the existing body of literature and research of responsible gambling
- aligns with the current priority research themes of the RGF
- will result in future practical applications to benefit the people of NSW.

### Viability (30%)

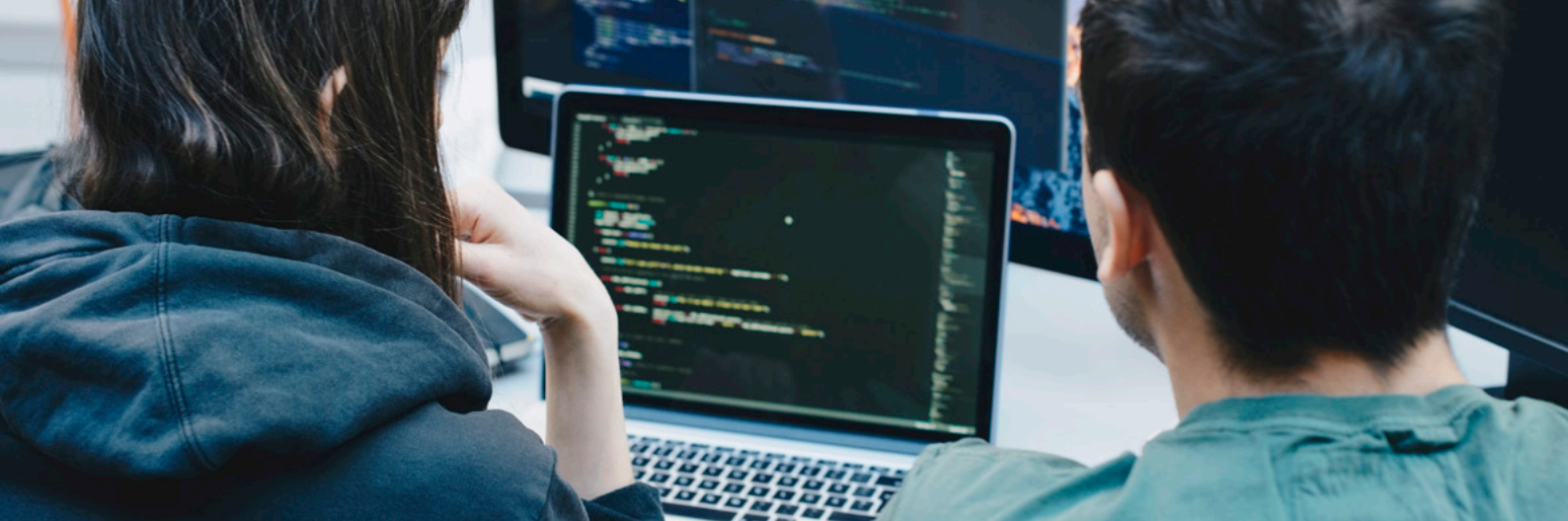
The extent to which the proposal:

- builds on established, earlier research
- has an achievable project scope, methodology, deliverables and timeline. Applicants need to articulate both the *output* and *outcomes* of the project
- brings together a project team with the appropriate skills to ensure success
- will be managed by an organisation with a sound track record in delivering similar projects, with appropriate governance arrangements
- involves collaborative partnerships, for instance between academics and industry or service providers.

### Learnings (20%)

The extent to which the proposal:

- has an evidenced understanding of the current opportunity or issue the project intends to address
- incorporates evaluation to present a final report with analysis of project learnings
- builds research capability and capacity
- considers and addresses the potential practical application and implementation of the learnings.



## Budget (20%)

The extent to which the proposal:

- offers value for money and appropriate use of government funds
- includes direct or in-kind contributions from the applicant
- is based on realistic estimated costs.

Assessors are required to identify any conflicts of interest and sign a conflict-of-interest declaration. Conflicts of interest will be handled in accordance with the Department's Conflict of Interest policy.

## How funding is decided

Applications are assessed by subject matter experts and considered by the RGF Trust. Applications recommended by the RGF Trust for funding are progressed to the Minister for final approval. Funding decisions are final and there is no right of appeal.

The Minister records their decision in writing, including any reason for the decision and any departure from the recommendation of the RGF Trust.

## Once a decision is made

After the assessment process is completed, applicants will be notified of the outcome of their application by email.

Applicants that are not successful may apply for feedback. There are no appeals under the Responsible Gambling Fund Grants Program.

Information about the grants awarded will be published on the NSW Government Grants and Funding Finder no later than 45 calendar days after the grant agreement takes effect.





## Funding conditions

- If you are approved for funding your proposal and your final report may be subject to independent peer review, and you will be required to address peer review feedback and provide evidence of ethics approval where relevant
  - sign a [Program Agreement](#) including standard terms and conditions that covers your obligations
  - agree that any research funded as part of the grants program may only be published subject to peer review, and subject to the satisfaction of the Office
  - publicise the funding from the Office of Responsible Gambling in relevant publications, media or other material, as applicable
  - report to the Office on the project on a set timeframe as outlined in the Program Agreement:
    - one final report for projects below \$20,000
    - every 6 months until complete for projects above \$20,000
    - reporting templates for project updates and income and expenditure will be provided.
- Applicants should note that, depending on the nature of the proposal, special funding conditions may be required such as cobranding and/or IP or appropriate licensing arrangements.
- Information provided in grant applications is confidential and will not be shared outside of the assessment process.

## Get in touch

Contact the Office of Responsible Gambling Grants team for assistance:

### Phone

(02) 9995 0992

### Translating and interpreter service

131 450

### Relay service

133 677 (TTY) or 0423 677 767 (SMS relay)

### Email

[info@responsiblegambling.nsw.gov.au](mailto:info@responsiblegambling.nsw.gov.au)

### More information

[gambleaware.nsw.gov.au](http://gambleaware.nsw.gov.au)