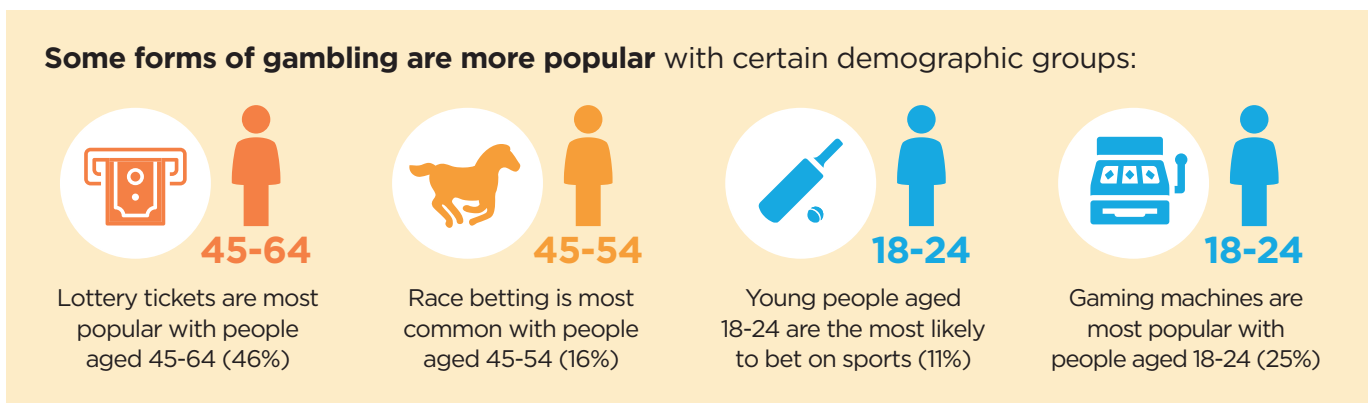
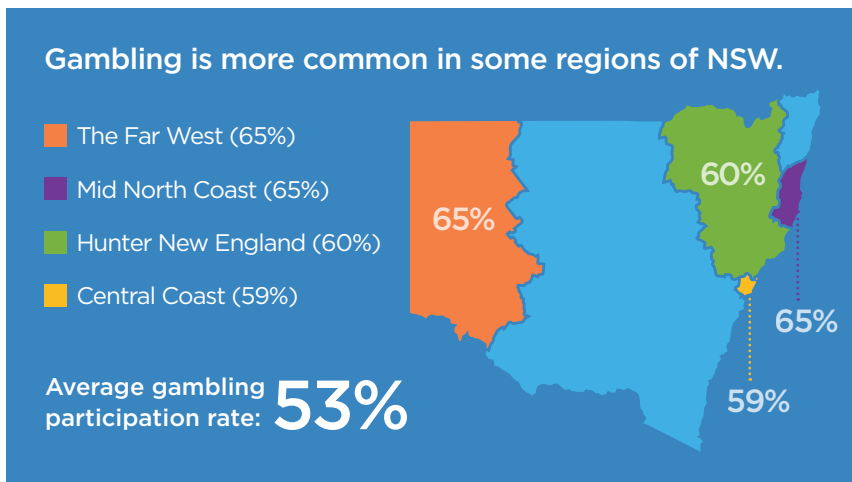
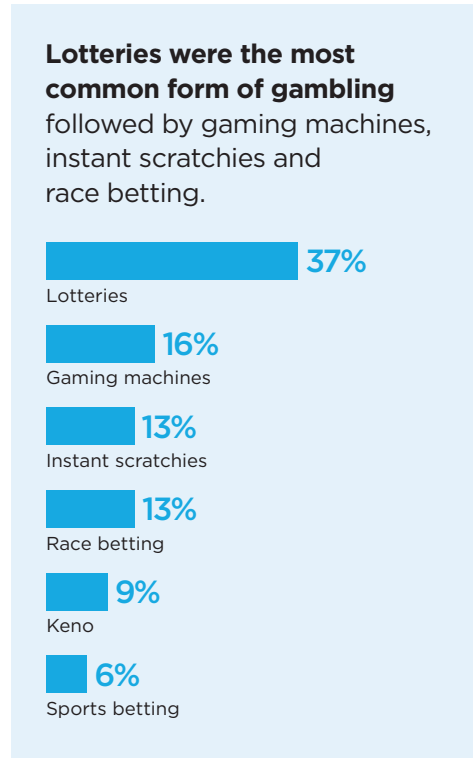
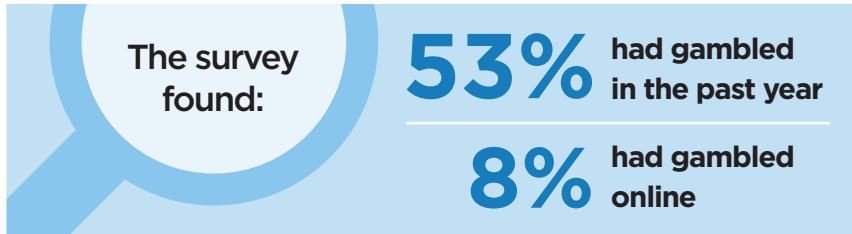


# Gambling in NSW

We surveyed over 10,000 people from across NSW about gambling. This was the first study of its kind in NSW since 2011.



- **People who speak languages other than English at home had lower participation across the more common forms of gambling**, except for lottery tickets (42% vs 37%), with an overall gambling participation rate of 59%.
- **Aboriginal people had higher participation overall (74%) and across most forms of gambling**, including lottery tickets (53%), gaming machines (40%), keno (30%) and racing (22%).

